

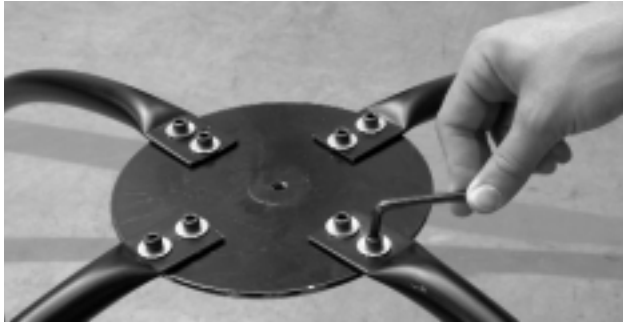
Soccette[®] Activity Guide



Introduction

Soccette was invented in Chad, Africa by an American who worked with the under-privileged junior high age boys who lived in his rural African village. The game of **Soccette** is quickly becoming popular because it is a game that is very inclusive and because it is played using soccer skills. **Soccette** is a versatile sport that can be played on any surface – from a grass field outdoors, to a hard floor indoors. **Soccette** can also be played in small playing areas where space is limited. **Soccette** is an exciting sport that combines the concepts of soccer and basketball into one unique game that can be played by children and adults alike. **Soccette** is for ages 12 and up. **Junior Soccette** is for ages 11 and under.

Assembly



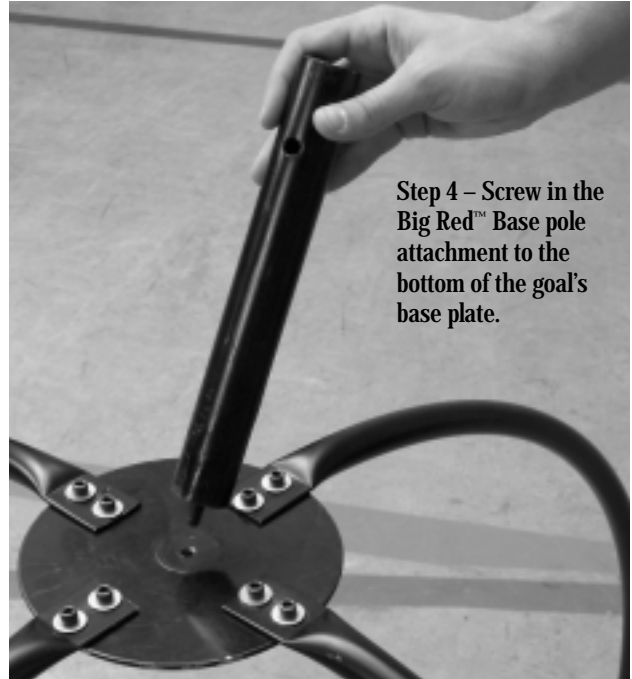
Step 1 - Attach the 4, rim-support bars to the base plate using a 5-mm Allen wrench (not included). There are 2 bolts for each support pole.



Step 2 - Attach the net to the rim as shown, above.



Step 3 - Attach the netted rim to the support bars using a 5-mm Allen wrench (not included). There are 2 bolts for each pole.



Step 4 - Screw in the Big Red™ Base pole attachment to the bottom of the goal's base plate.



Step 5 - Slide the pole attachment and assembled goal into the Big Red Base Short Post.

(Note: Make sure your Big Red Base is properly weighted with sand or water before completing this step.)

Simplified Soccette Rules

Soccette has proven to be a fun game for physical education programs, parties, in backyards with neighborhood friends and with kids of all ages and skill levels. When playing **Soccette** in these types of casual settings, you may want to use one of the following sets of simplified **Soccette** rules:

Group Free-For-All Rules: **Soccette** is played like soccer in that the goal of the game is to kick, to head or to knee the ball into the goal without using your hands. Place the **Soccette** goal at the center of the play area. Now position the players around the **Soccette** goal. Using the official **Junior Soccette Ball**, throw this ball into play. Everyone stays in their own personal zone as the ball is kicked and headed from person-to-person until someone scores. The last person to touch the ball before it goes into the goal gets one point. There is no out-of-bounds in this informal game. Simply keep the ball in play. The player with the most points at the end of the game wins.

Simplified Team Rules: As always in **Soccette**, the goal of the game is to kick, to head or to knee the ball into the goal without using your hands. Place the **Soccette** goal at the center of the play area. This time divide the players into two teams. These teams can have as many or as few players as you may want. Use either the official **Soccette Ball** or the official **Junior Soccette Ball** based on the ages and skill level of the players. One team will start the game by placing the ball on the ground and kicking it into play. The last person on a given team to touch the ball before it goes into the goal is awarded a point for their team. After a scored point, the opposing team gets to kick the ball back into play from outside of the playing area.

The Playing Area: this is what makes **Soccette** such a flexible game. You can play on a basketball court by simply using the basketball sidelines as the boundaries. Or you can draw a circular boundary line with chalk on blacktop, draw the boundaries with a stick on a dirt lot, mark the boundaries on a soccer field or play with no boundaries at all. When the ball crosses the boundary line, the opposing team gets to throw the ball to his team. The team with the most points at the end of the game wins.

Official Rules Of Soccette (ages 12 and up)

The Goal of the Game: **Soccette** is played like soccer in that the goal of the game is to kick, to head or to knee the ball into the goal without using your hands.

Equipment: The **Soccette** Goal: There is only one large goal located at the center of the play area. This goal is comprised of a hoop that is one-meter (39 inches) in diameter and two-meters (6'6") high. The official **Soccette Ball**: This ball is 25% larger than and about the same weight as a size 5 soccer ball. The **Soccette** ball was designed especially for the game of **Soccette** by Sportime in order to provide a ball that would be easier to juggle in the air.

Official Playing Area: The official playing area for **Soccette** is the area within the 28m (92') circular touchline (sideline) with the **Soccette** goal at its center. (See "simplified **Soccette** rules" for information on using smaller play areas). This circular play area is divided in half by a centerline. The play area also has an inner circle drawn at a 5-meter (16 feet) radius from the center support pole of the goal. The purpose of this inner circle is to help the players get their bearings on the field without having to constantly look for the goal. There are two penalty marks on each side of the centerline that are located 7-meters (23 feet) from the goal. Each penalty mark is perpendicular to the centerline (see figure 1).

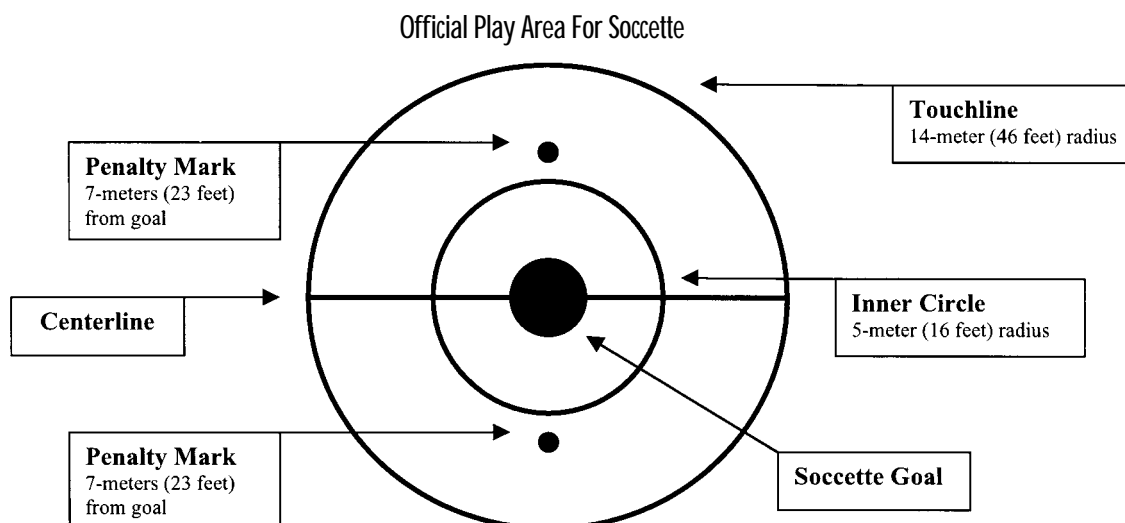


Figure 1

How to Play the Game: Two teams play **Soccette** with three players on each team. The winner of the pre-game coin toss gets the ball first. The ball is placed anywhere just outside the circular touch line. The ball is then kicked into play. Any time the ball is placed outside the touchline, the kick will always be an indirect kick meaning that another player must touch the ball before a point can be scored. The last team to touch the ball before it goes into the goal, scores one. In the game of **Soccette**, all baskets made are worth one point. After a point is scored, the opposing team places the ball just outside the touchline, and then they kick the ball into play again.

The throw-in is awarded to the opponents of the player who last touched the ball before it crossed the touchline. The throw-in is performed exactly like an official throw-in in soccer: i.e., the ball must be thrown with both hands while both feet are on the ground, and it must be released overhead. No point is credited if the ball is thrown or bounced directly into the hoop without first making contact with another player.

Soccette has two, 30-minute halves. The team that lost the coin toss in the first half of the game kicks-off in the second half. Each team is allowed two time-outs per half. Each time-out lasts up to one minute. Substitutions may be made at time-outs or between points by the team who is kicking off.

Fouls and Misconduct

Direct and Indirect Penalty Kicks are awarded to the opposing team if a player commits one of a number of offenses. For all Penalty Kicks, the ball is placed on the Penalty Mark (located 7 meter [23 feet] from the goal), and all players from both teams must position themselves on the opposite side of the centerline from the designated player who will attempt to kick the ball into the goal from the Penalty Mark. If the kicker misses the goal and the ball traverses the centerline, then the ball is now in play for both teams. If the kicker does not succeed in kicking the ball across the center line, then the opposing team is awarded a throw-in.

Direct Penalty Kicks: from the Penalty Mark, the kicker can score directly into the goal. Direct Penalty Kicks are awarded by the Referee to the opposing team for the following types infractions: intentional handball fouls, tripping, holding, high kicks, recklessness and any other flagrant or violent contact.

Indirect Penalty Kicks: from the Penalty Mark, the kicker must kick the ball to another player on the other side of the center line before a point can be scored. Indirect Penalty Kicks are awarded to the opposition for: mild fouls or misconduct and for low header fouls (i.e. heading the ball below waist level in close proximity to an opponent. Note: low headers are dangerous in the game of **Soccette**).

Note: The Yellow Card and Red Card penalty system are the same as in soccer.

Official Rules Of Junior Soccette (ages 11 and under)

To play Junior **Soccette**, read “The Official Rules of **Soccette**” above, and then make the following changes:

Equipment: Though Junior **Soccette** requires the same 1m diameter x 2m high goal used in the official game, it’s played with its own unique ball. This Sportime-designed NyLyte™ ball is, with its 12” diameter and 4.5 oz. weight, 25% larger and an incredible 70% lighter than a size 5 soccer ball. This combination of weight to size allows the ball’s use by virtually any child or adult. It literally floats on the existing air currents and eliminates any fear of being hurt.

Official Playing Area: The official playing area for Junior **Soccette** is the area within the circular touchline (sideline). The touchline is 10-meters (33 feet) radius measured from the center support pole of the **Soccette** goal. This circular play area is divided in half by a centerline. The play area also has an inner circle drawn at a 5-meter (16 feet) radius from the center support pole of the goal. The purpose of this inner circle is to help the players get their bearings on the field without having to constantly look for the goal. There are two penalty marks on each side of the centerline that are located 5-meters (16 feet) from the goal. Each penalty mark is perpendicular to the centerline and overlaps with the inner circle (see figure 2).

Official Play Area For Junior Soccette

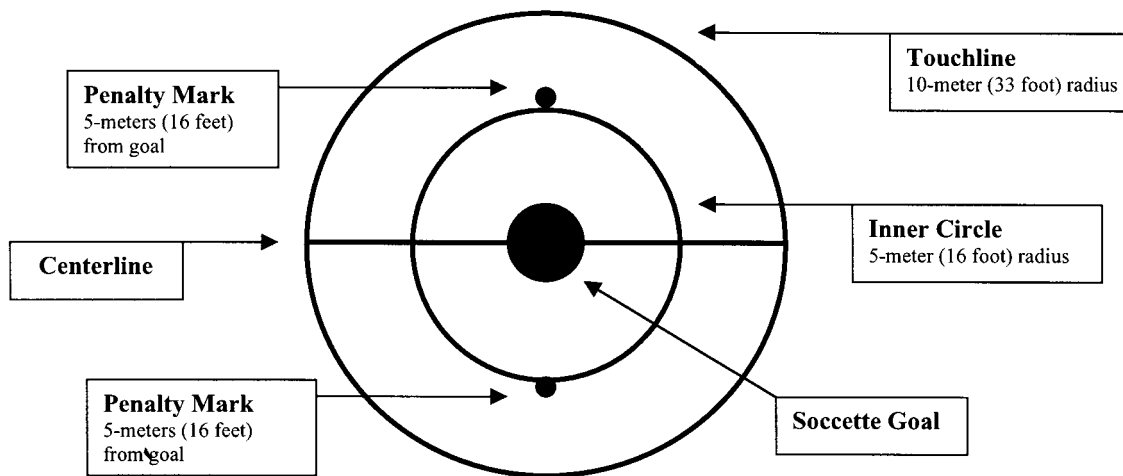


Figure 2

Several other rule differences between Soccette and Junior Soccette are:

Two teams play Junior Soccette with five players on each team.

Each half of playtime in Junior Soccette only lasts 20 minutes.

Penalty kicks in Junior Soccette are shot from 5 meters (16 feet).

Safety Precautions

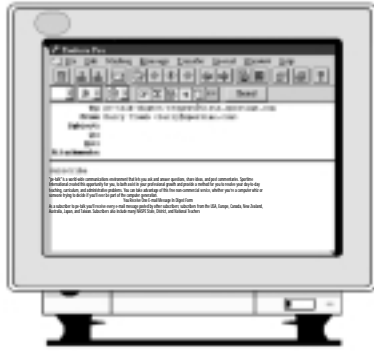
Low headers are dangerous in the game of Soccette. Soccette uses the head quite often to shoot arching shots toward the goal. Heading the ball below waist level, in close proximity to an opponent, is considered a foul in order to reduce the chances of getting kicked in the face.

Be careful not to run into the center support pole of the Soccette goal. The Soccette goal is located in the middle of the play area, and because of this, the players need to avoid hard contact with the goal.

Avoid high kicks and reckless headers to keep from injuring yourself and/or others.

For More Information:

Follow the latest developments and updates of the game of Soccette at the official Soccette web site: www.soccette.com. Copyright Prodigy Sports International, LLC all rights reserved (copyright used by Sportime with written permission).



Communicate With Physical Educators From Around The World

pe-talk

Your Most Direct Route On The Information Highway

Pe-talk is a worldwide communications environment that lets you ask and answer questions, share ideas and post commentaries. Sportime International created this opportunity for you, to both assist in your professional growth and provide a method for you to resolve your day-to-day teaching, curriculum and administrative problems. You can take advantage of this free non-commercial service, whether you're a computer whiz or someone trying to decide if you'll ever be part of the computer generation.

You Receive One E-mail Message In Digest Form

As a subscriber to pe-talk you'll receive every e-mail message posted by other subscribers, including: subscribers from the USA, Europe, Canada, New Zealand, Australia, Japan and Taiwan. Subscribers also include many NASPE State, District and National Teachers of the Year. Read your e-mail digest at your leisure and respond to none or as many messages as you wish. Think of the opportunities for making new professional friends.

There Are Now 2 Ways To Subscribe To pe-talk

pe-talk does not require that you be on the Internet, only that you have the ability to send and receive e-mail. Your pe-talk digest will always be delivered to you as mail. However, if you are on the "net" there are now two ways that you can subscribe.

1

Via e-mail: Send the following one word message. Everything must be in lower case just as typed.

Address: *pe-talk-digest-request@lists.sportime.com*

Message: *subscribe*

Note: You do not have to type anything on the "subject" line, but if your program requires it in order to send e-mail, simply type "I Love P.E."

2

Via any NET Browser (Netscape, Internet Explorer, Mosaic, etc.): Go to:

<http://www.sportime.com/pe-talk/>

You'll find our "Mini Subscription Web Page." Just type in your e-mail address and click the "subscribe" button. That's it.

SPORTIME[®]
INTERNATIONAL
A School Specialty Company

©2002 Sportime, LLC • Atlanta, GA 30340 • USA • All rights reserved.

Customer Service **1-800-444-5700** or **1-770-449-5700**

Or reach us via e-mail at: **customer.service@sportime.com**

1-YEAR GUARANTEE OF SATISFACTION

See more, fun activity guides for other great Sportime products at www.sportime.com.